









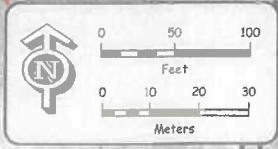
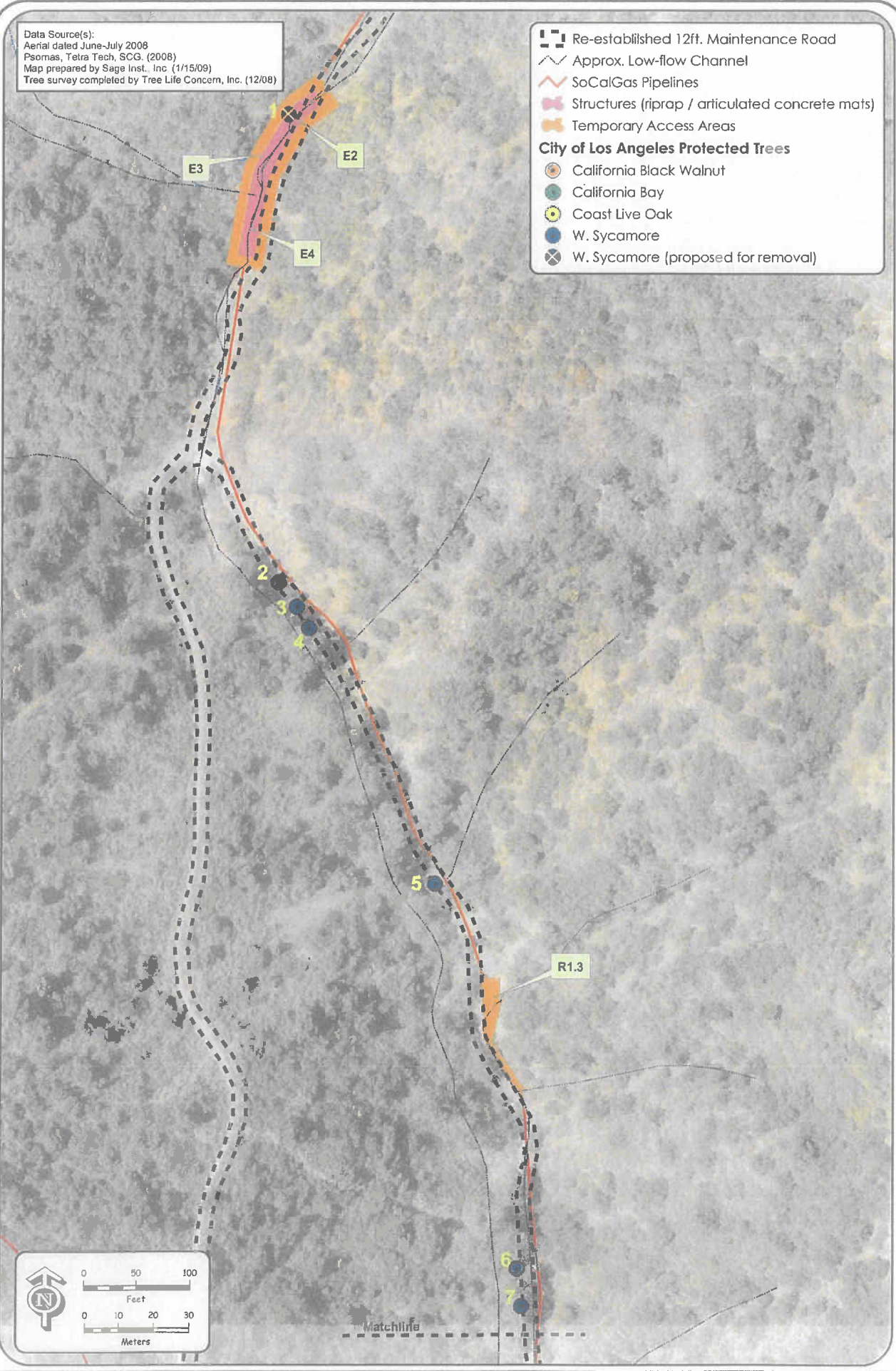


Data Source(s):  
 Aerial dated June-July 2008  
 Psomas, Tetra Tech, SCG. (2008)  
 Map prepared by Sage Inst., Inc. (1/15/09)  
 Tree survey completed by Tree Life Concern, Inc. (12/08)

-  Re-established 12ft. Maintenance Road
  -  Approx. Low-flow Channel
  -  SoCalGas Pipelines
  -  Structures (riprap / articulated concrete mats)
  -  Temporary Access Areas
- City of Los Angeles Protected Trees**
-  California Black Walnut
  -  California Bay
  -  Coast Live Oak
  -  W. Sycamore
  -  W. Sycamore (proposed for removal)

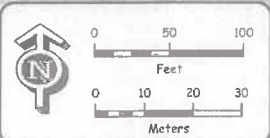
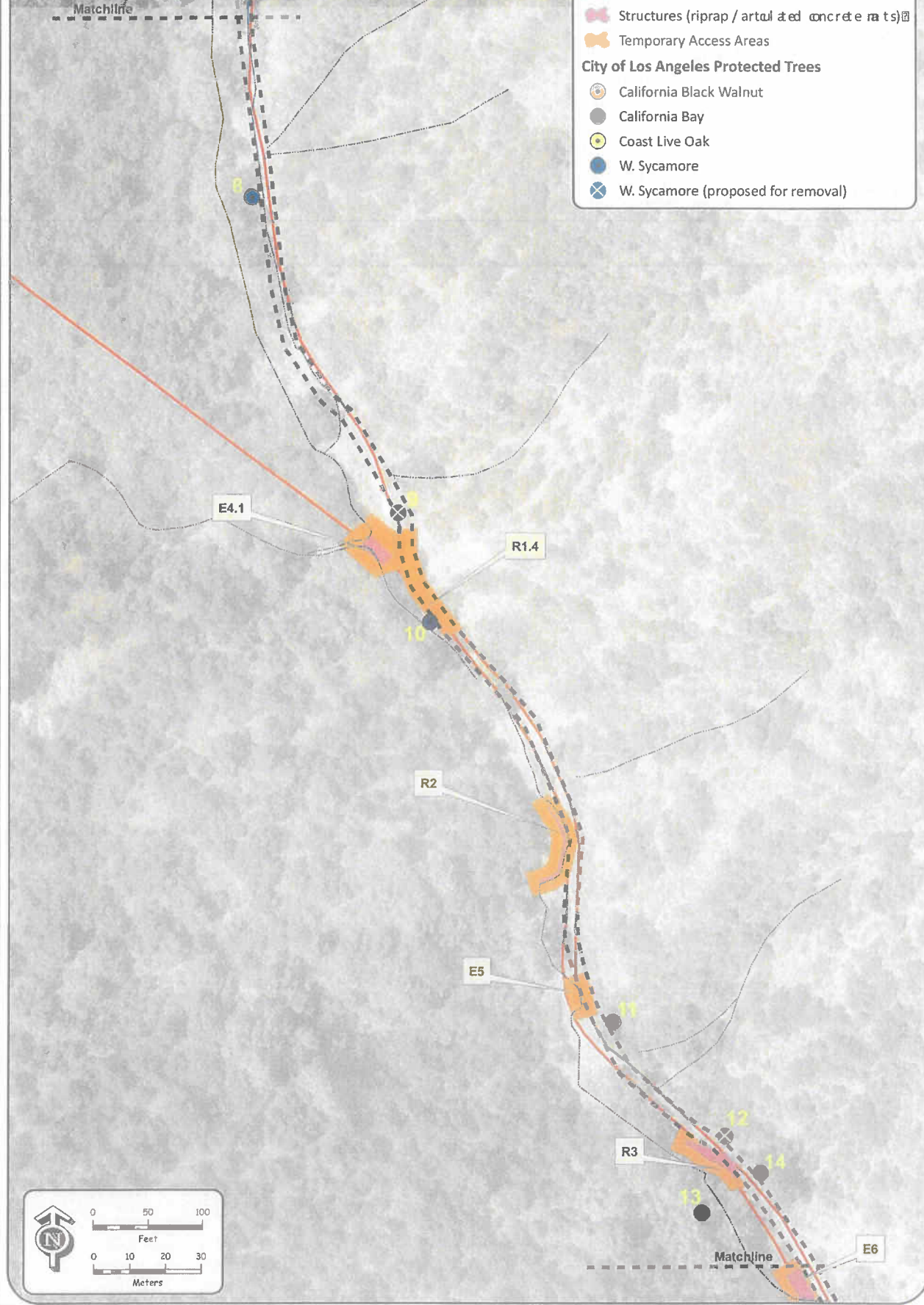


L3003 & L407 (Sullivan Canyon) Pipeline Protection Plan Project  
 Southern California Gas Company

T-1  
 Tree Survey  
 City of Los Angeles

Data Source(s):  
 Aerial dated June-July 2008  
 Psomas, Tetra Tech, SCG (2008)  
 Map prepared by Sage Inst., Inc. (1/15/09)  
 Tree survey completed by Tree Life Concern, Inc. (12/08)











- Re-established 12ft. Maintenance Road
  - Approx. Low-flow Channel
  - SoCalGas Pipelines
  - Structures (riprap / artful & ed concrete ra ts)
  - Temporary Access Areas
- City of Los Angeles Protected Trees**
- California Black Walnut
  - California Bay
  - Coast Live Oak
  - W. Sycamore
  - W. Sycamore (proposed for removal)

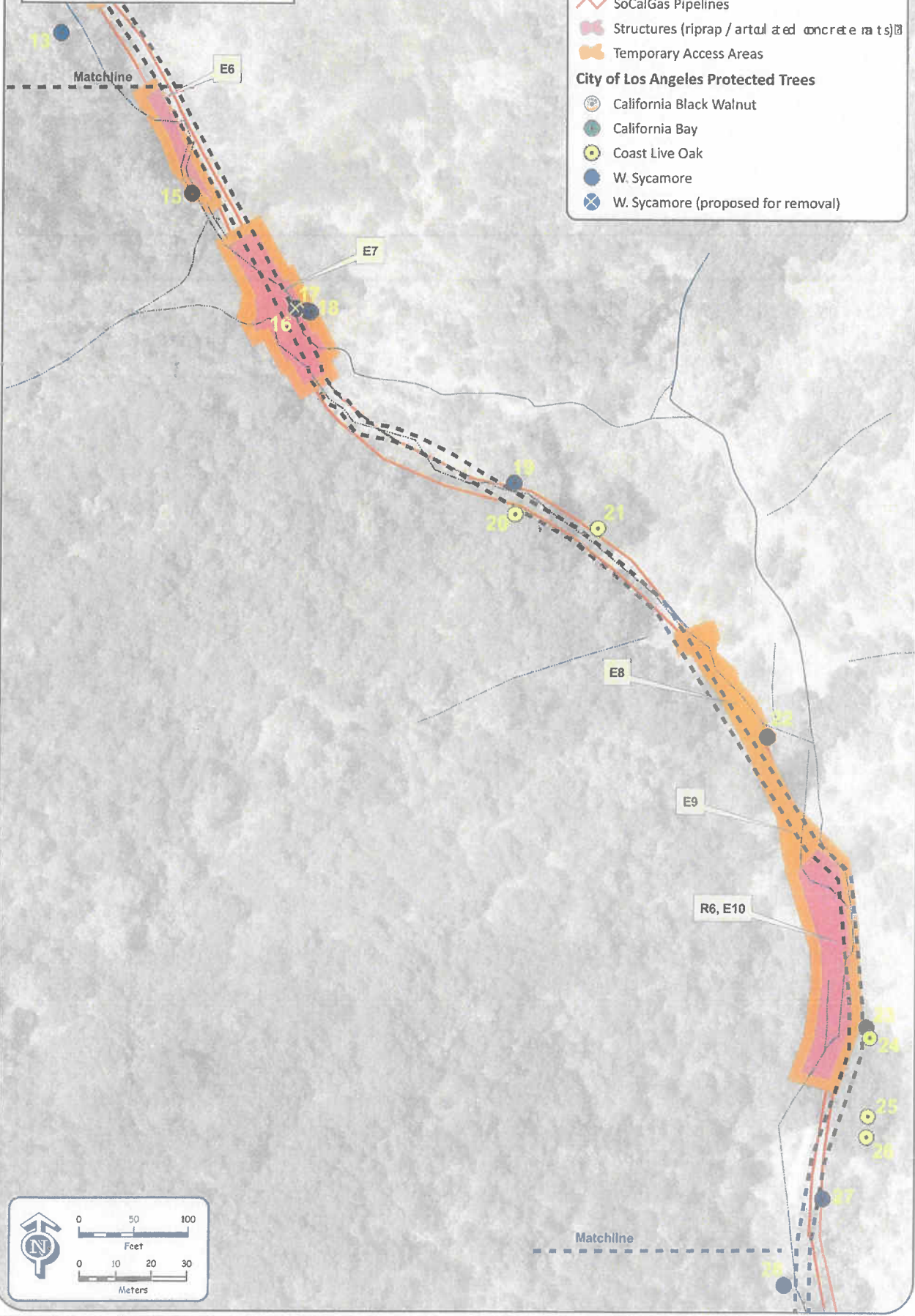


L3003 & L407 (Sullivan Canyon) Pipeline Protection Plan Project  
 Southern California Gas Company

T-2  
 Tree Survey  
 City of Los Angeles

Data Source(s):  
 Aerial dated June-July 2008  
 Psomas, Tetra Tech, SCG. (2008)  
 Map prepared by Sage Inst., Inc. (1/15/09)  
 Tree survey completed by Tree Life Concern, Inc. (12/08)

-  Re-established 12ft. Maintenance Road
  -  Approx. Low-flow Channel
  -  SoCalGas Pipelines
  -  Structures (riprap / artuæd concrete ra ts)
  -  Temporary Access Areas
- City of Los Angeles Protected Trees**
-  California Black Walnut
  -  California Bay
  -  Coast Live Oak
  -  W. Sycamore
  -  W. Sycamore (proposed for removal)

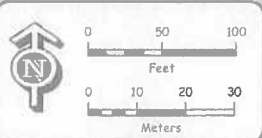
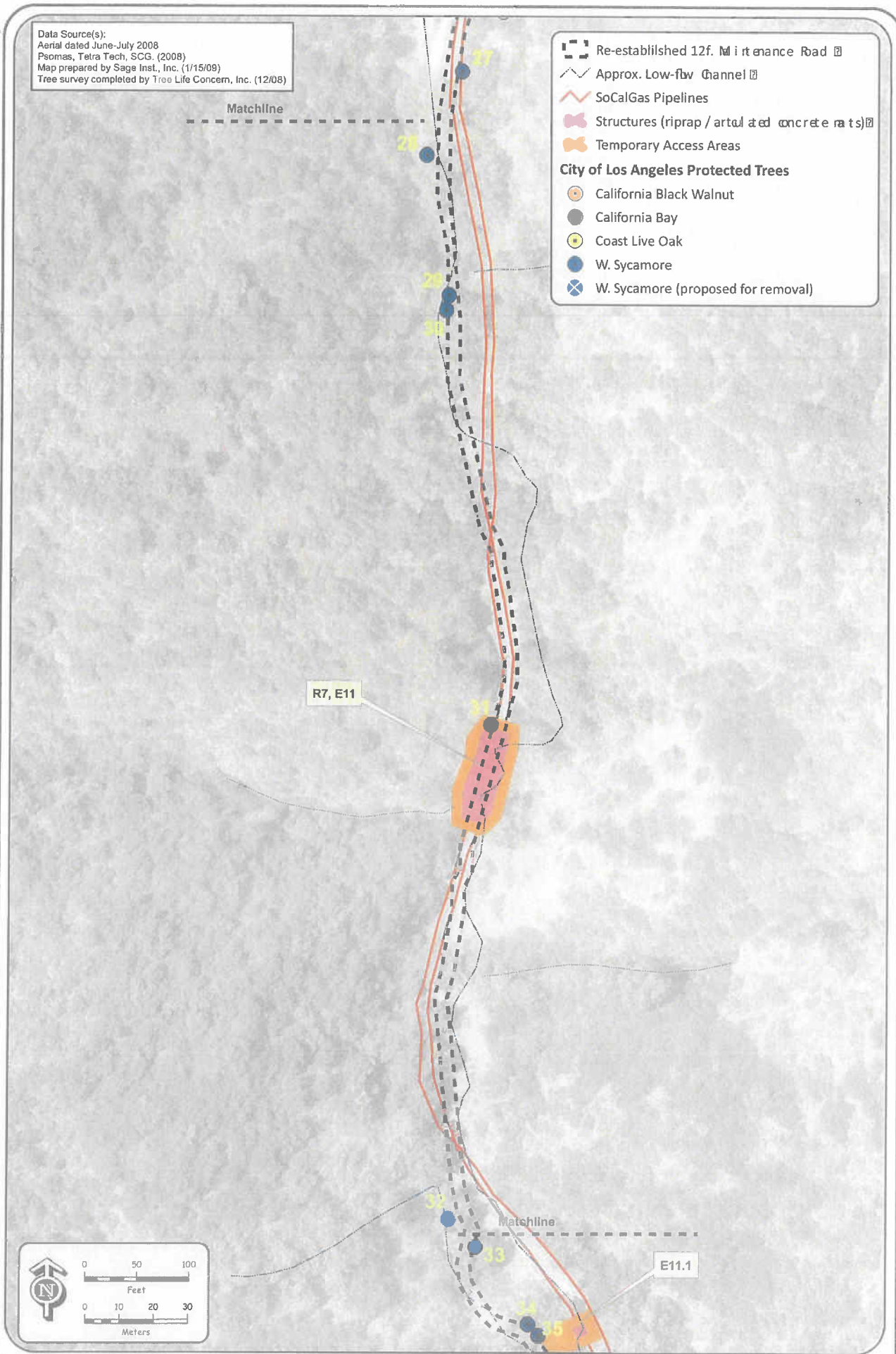


L3003 & L407 (Sullivan Canyon) Pipeline Protection Plan Project  
 Southern California Gas Company

T-3  
 Tree Survey  
 City of Los Angeles

Data Source(s):  
 Aerial dated June-July 2008  
 Psomas, Tetra Tech, SCG. (2008)  
 Map prepared by Sage Inst., Inc. (1/15/09)  
 Tree survey completed by Tree Life Concern, Inc. (12/08)

- Re-established 12ft. Maintenance Road
  - Approx. Low-flow Channel
  - SoCalGas Pipelines
  - Structures (riprap / art and concrete rafts)
  - Temporary Access Areas
- City of Los Angeles Protected Trees**
- California Black Walnut
  - California Bay
  - Coast Live Oak
  - W. Sycamore
  - W. Sycamore (proposed for removal)

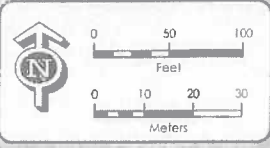
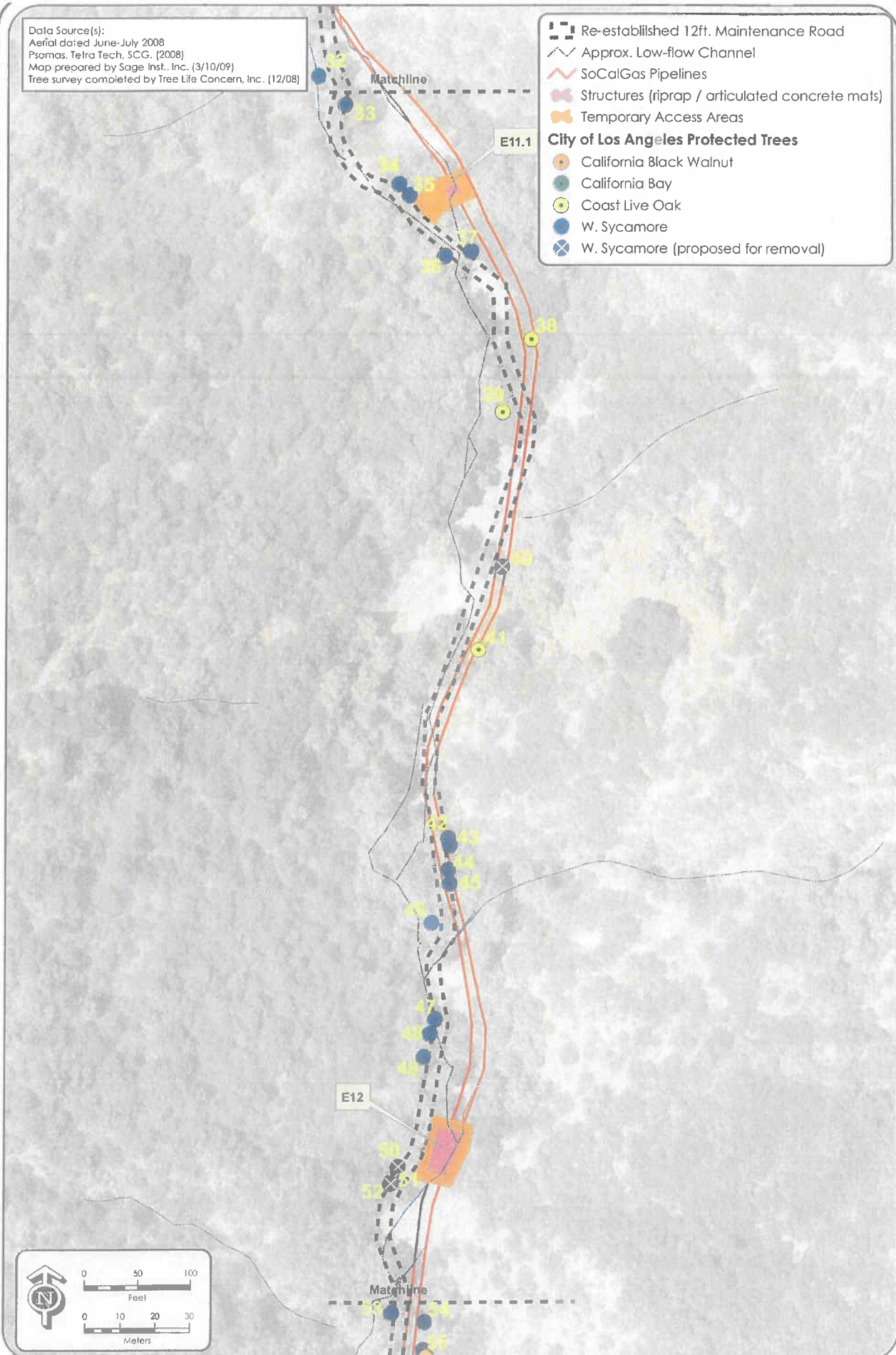


L3003 & L407 (Sullivan Canyon) Pipeline Protection Plan Project  
 Southern California Gas Company

T-4  
 Tree Survey  
 City of Los Angeles

Data Source(s):  
 Aerial dated June-July 2008  
 Psomas, Tetra Tech, SCG, (2008)  
 Map prepared by Sage Inst., Inc. (3/10/09)  
 Tree survey completed by Tree Life Concern, Inc. (12/08)

- Re-established 12ft. Maintenance Road
  - Approx. Low-flow Channel
  - SoCalGas Pipelines
  - Structures (riprap / articulated concrete mats)
  - Temporary Access Areas
- City of Los Angeles Protected Trees**
- California Black Walnut
  - California Bay
  - Coast Live Oak
  - W. Sycamore
  - W. Sycamore (proposed for removal)

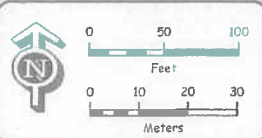
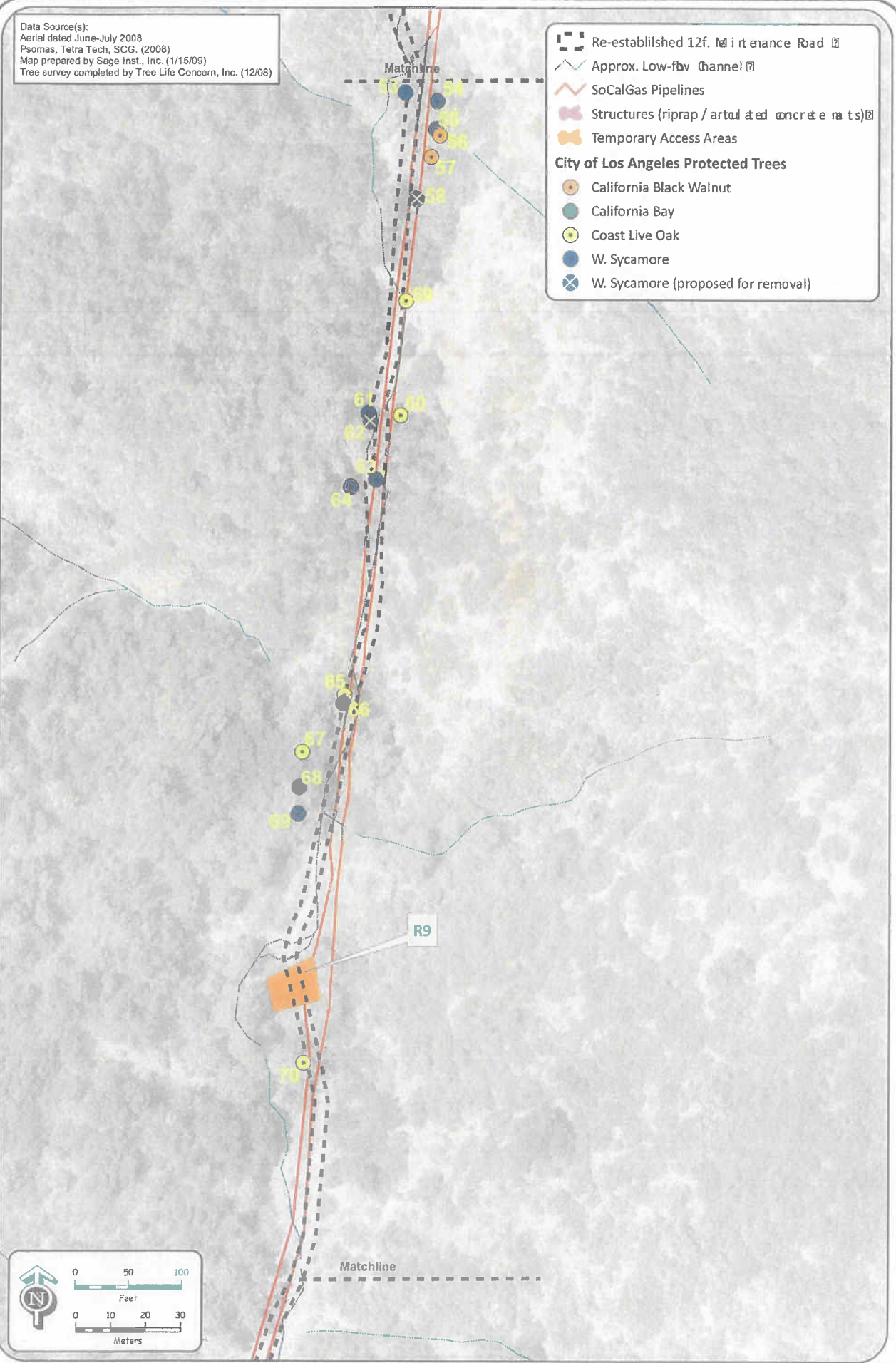


L3003 & L407 (Sullivan Canyon) Pipeline Protection Plan Project  
 Southern California Gas Company











**T-5 (Version 2)**  
 Tree Survey  
 City of Los Angeles

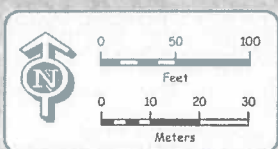
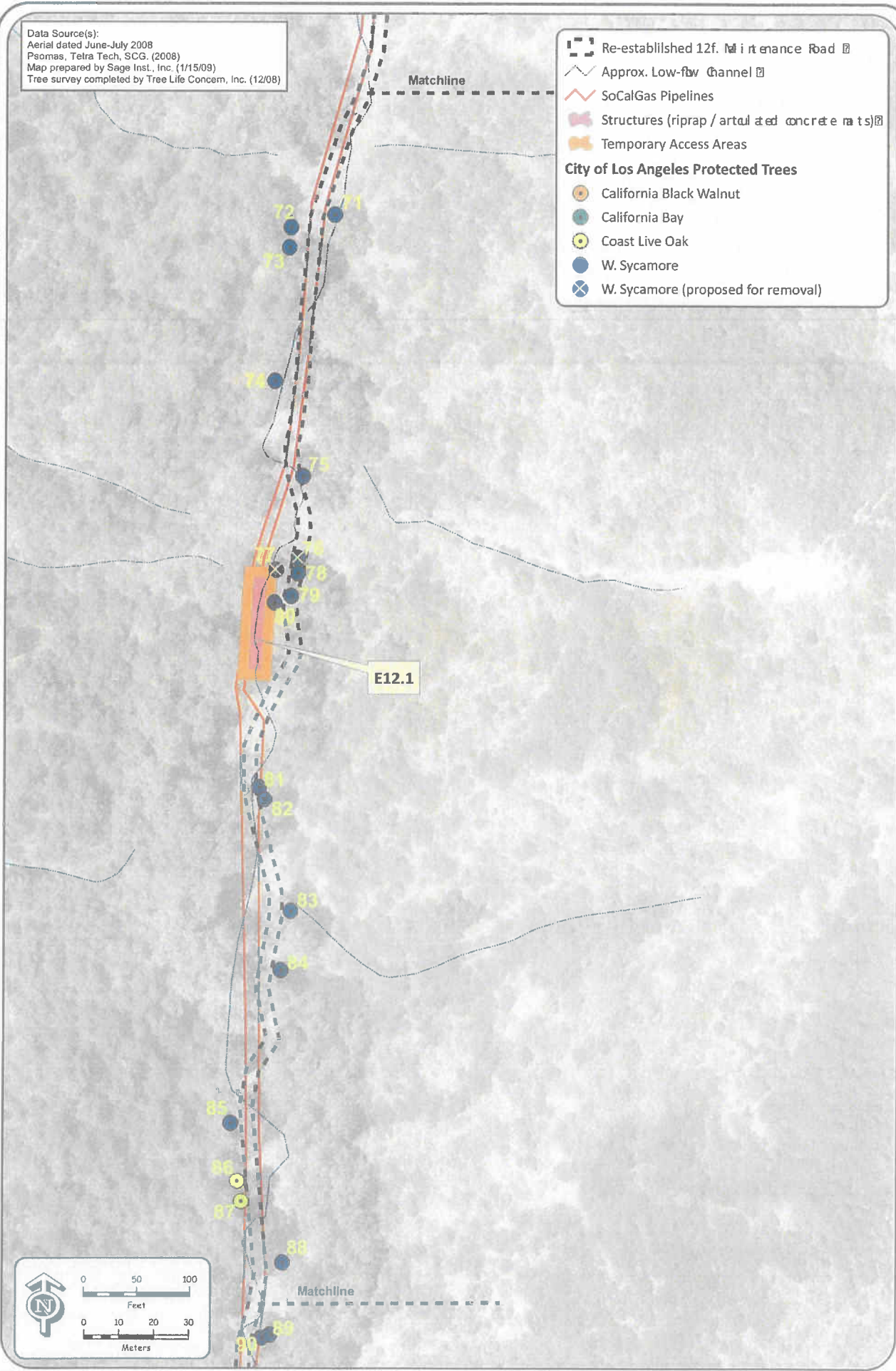
Data Source(s):  
 Aerial dated June-July 2008  
 Psomas, Tetra Tech, SCG. (2008)  
 Map prepared by Sage Inst., Inc. (1/15/09)  
 Tree survey completed by Tree Life Concern, Inc. (12/08)

- Re-established 12ft. Maintenance Road
  - Approx. Low-flow Channel
  - SoCalGas Pipelines
  - Structures (riprap / artificial concrete mats)
  - Temporary Access Areas
- City of Los Angeles Protected Trees**
- California Black Walnut
  - California Bay
  - Coast Live Oak
  - W. Sycamore
  - W. Sycamore (proposed for removal)



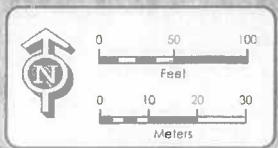
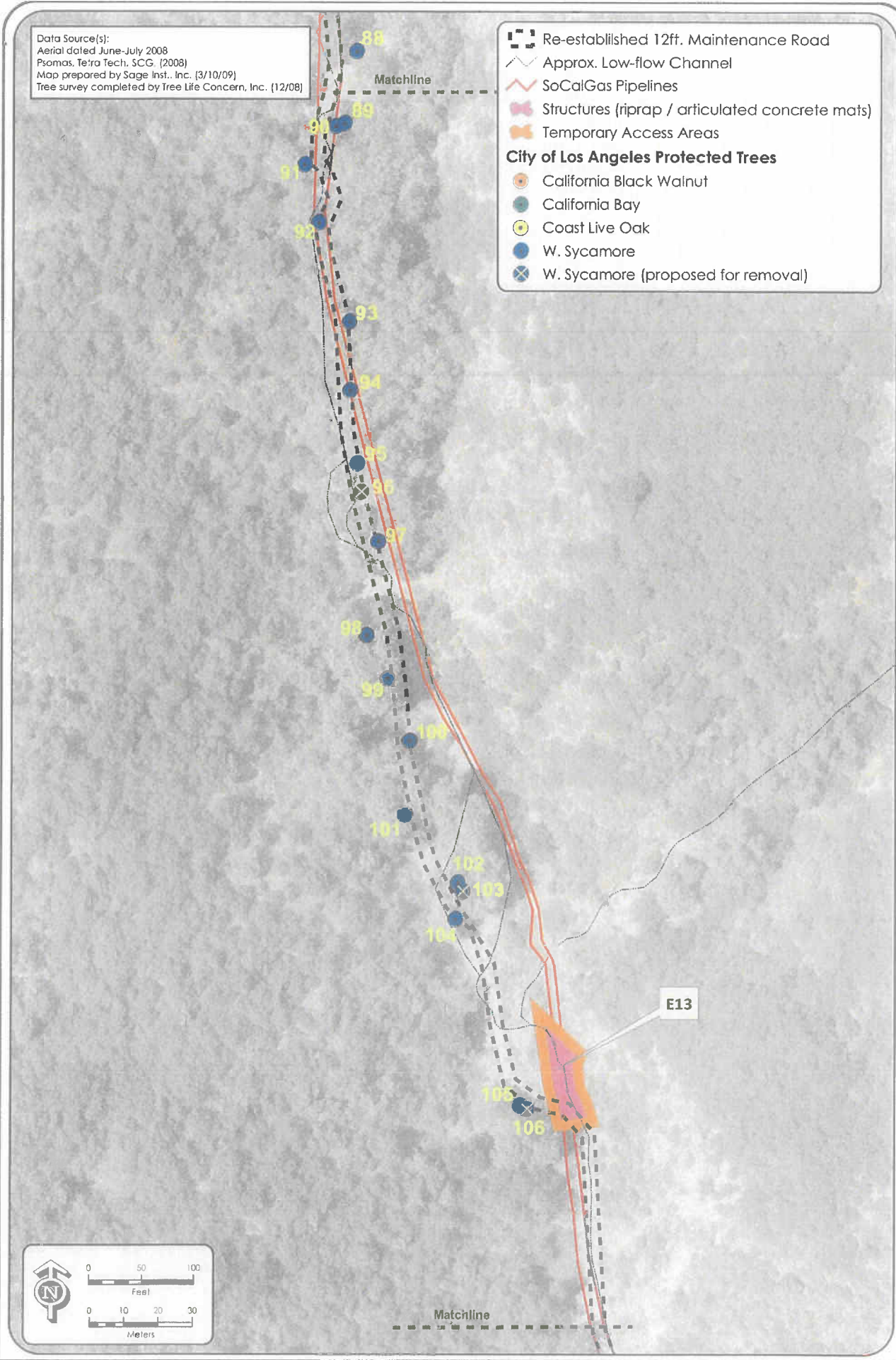
Data Source(s):  
 Aerial dated June-July 2008  
 Psomas, Tetra Tech, SCG. (2008)  
 Map prepared by Sage Inst., Inc. (1/15/09)  
 Tree survey completed by Tree Life Concern, Inc. (12/08)

-  Re-established 12ft. Maintenance Road
  -  Approx. Low-flow Channel
  -  SoCalGas Pipelines
  -  Structures (riprap / articulated concrete mats)
  -  Temporary Access Areas
- City of Los Angeles Protected Trees**
-  California Black Walnut
  -  California Bay
  -  Coast Live Oak
  -  W. Sycamore
  -  W. Sycamore (proposed for removal)



Data Source(s):  
 Aerial dated June-July 2008  
 Psomas, Tetra Tech, SCG (2008)  
 Map prepared by Sage Inst., Inc. (3/10/09)  
 Tree survey completed by Tree Life Concern, Inc. (12/08)

- Re-established 12ft. Maintenance Road
  - Approx. Low-flow Channel
  - SoCalGas Pipelines
  - Structures (riprap / articulated concrete mats)
  - Temporary Access Areas
- City of Los Angeles Protected Trees**
- California Black Walnut
  - California Bay
  - Coast Live Oak
  - W. Sycamore
  - W. Sycamore (proposed for removal)


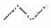










L3003 & L407 (Sullivan Canyon) Pipeline Protection Plan Project  
 Southern California Gas Company

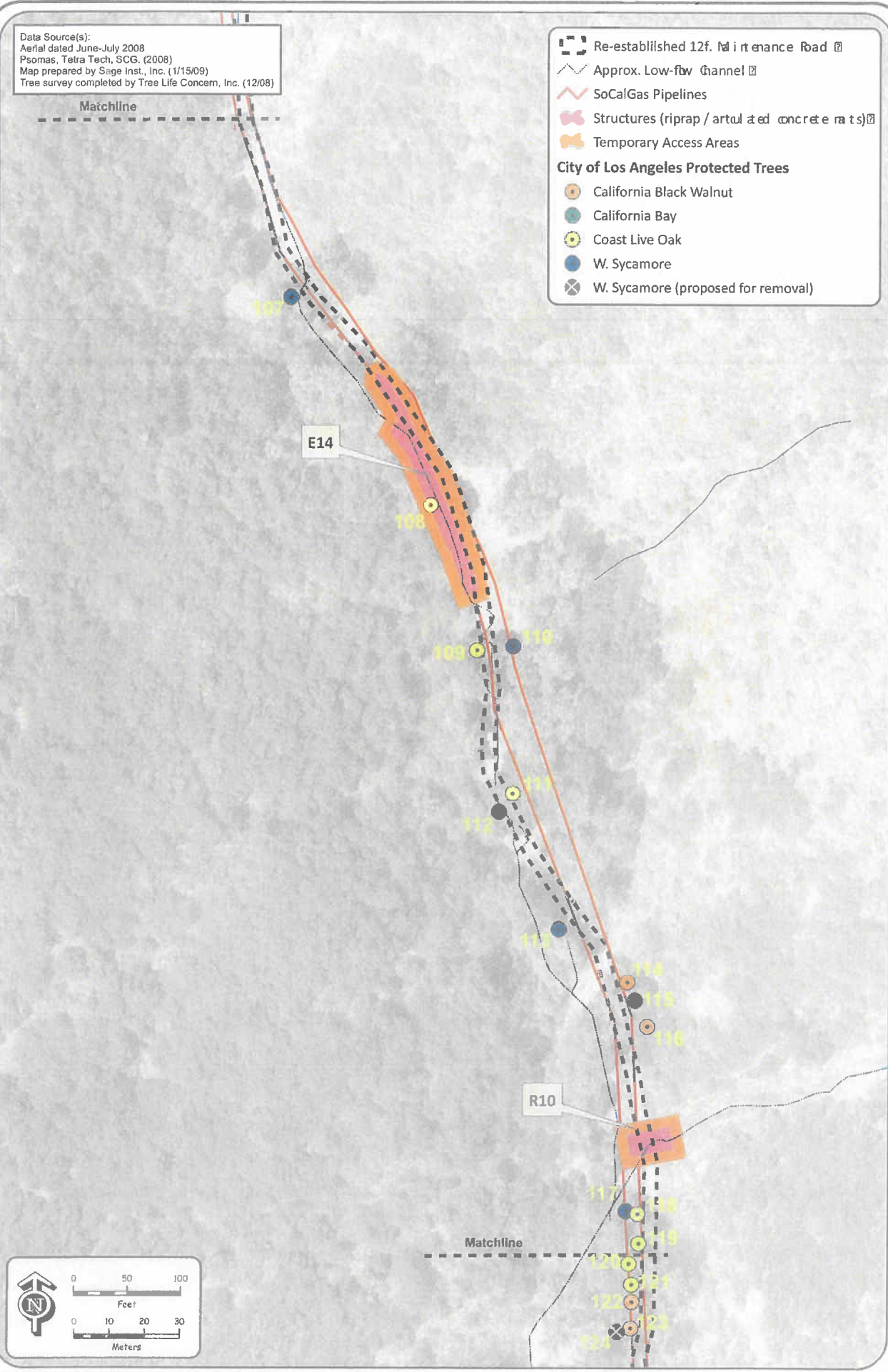
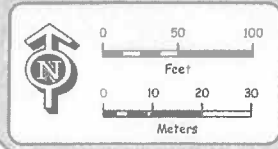
**T-8 (Version 2)**  
 Tree Survey  
 City of Los Angeles



Data Source(s):  
 Aerial dated June-July 2008  
 Psomas, Tetra Tech, SCG. (2008)  
 Map prepared by Sage Inst., Inc. (1/15/09)  
 Tree survey completed by Tree Life Concern, Inc. (12/08)











-  Re-established 12f. Maintenance Road
  -  Approx. Low-flow Channel
  -  SoCalGas Pipelines
  -  Structures (riprap / artu and concrete rats)
  -  Temporary Access Areas
- City of Los Angeles Protected Trees**
-  California Black Walnut
  -  California Bay
  -  Coast Live Oak
  -  W. Sycamore
  -  W. Sycamore (proposed for removal)

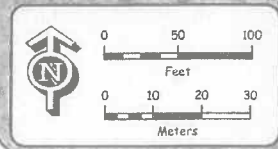
Matchline



Data Source(s):  
 Aerial dated June-July 2008  
 Psomas, Tetra Tech, SCG. (2008)  
 Map prepared by Sage Inst., Inc. (1/15/09)  
 Tree survey completed by Tree Life Concern, Inc. (12/08)

Matchline

-  Re-established 12f. Maintenance Road
  -  Approx. Low-flow Channel
  -  SoCalGas Pipelines
  -  Structures (riprap / artu and concrete ra ts)
  -  Temporary Access Areas
- City of Los Angeles Protected Trees**
-  California Black Walnut
  -  California Bay
  -  Coast Live Oak
  -  W. Sycamore
  -  W. Sycamore (proposed for removal)



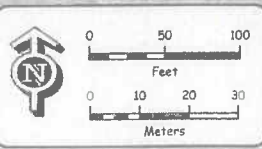
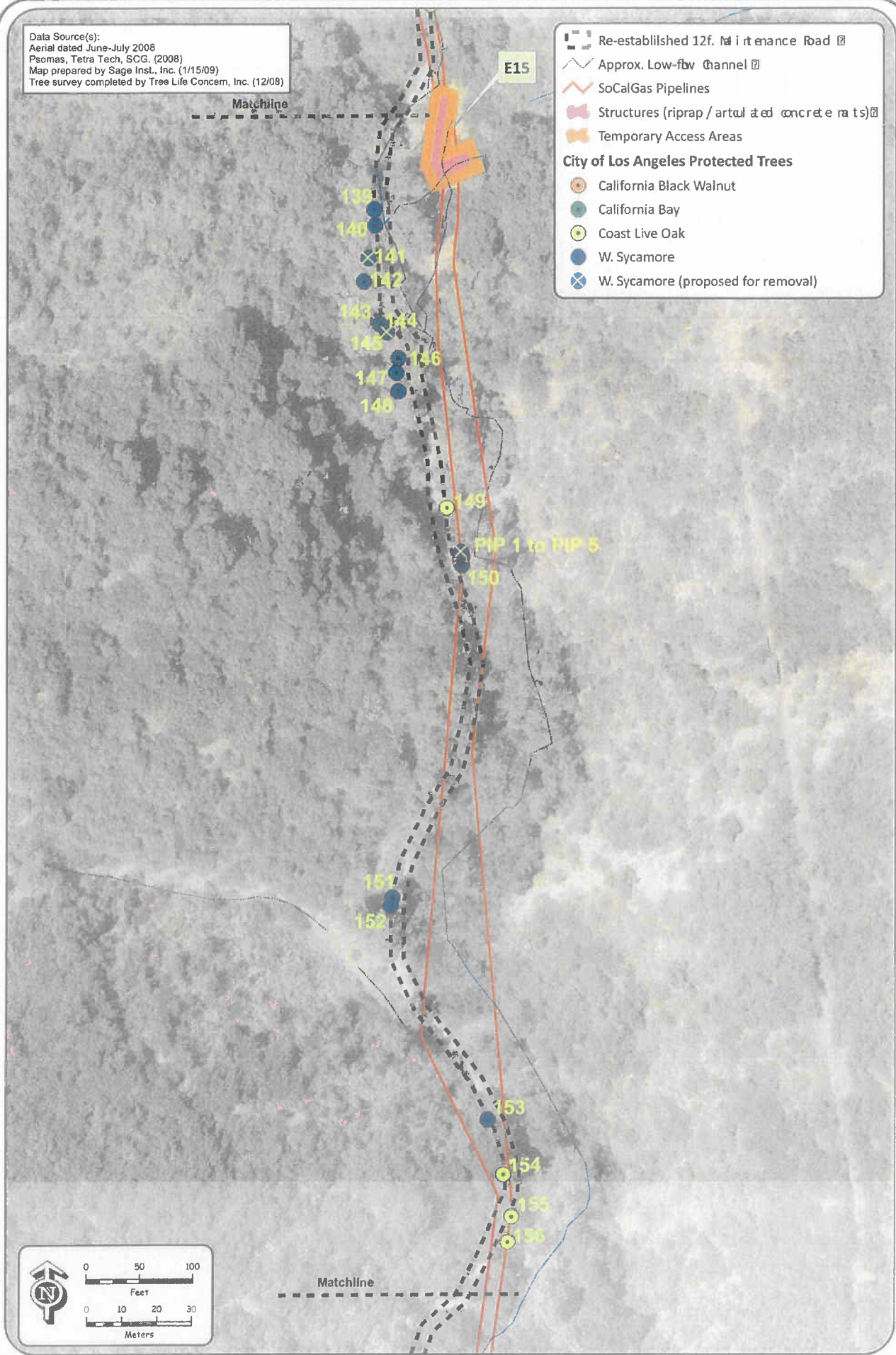
Matchline

E15



Data Source(s):  
 Aerial dated June-July 2008  
 Psomas, Tetra Tech, SCG, (2008)  
 Map prepared by Sage Inst., Inc. (1/15/09)  
 Tree survey completed by Tree Life Concern, Inc. (12/08)

- Re-established 12f. Maintenance Road
  - Approx. Low-flow Channel
  - SoCalGas Pipelines
  - Structures (riprap / artuclated concrete ra ts)
  - Temporary Access Areas
- City of Los Angeles Protected Trees**
- California Black Walnut
  - California Bay
  - Coast Live Oak
  - W. Sycamore
  - W. Sycamore (proposed for removal)

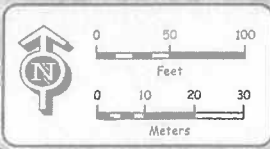
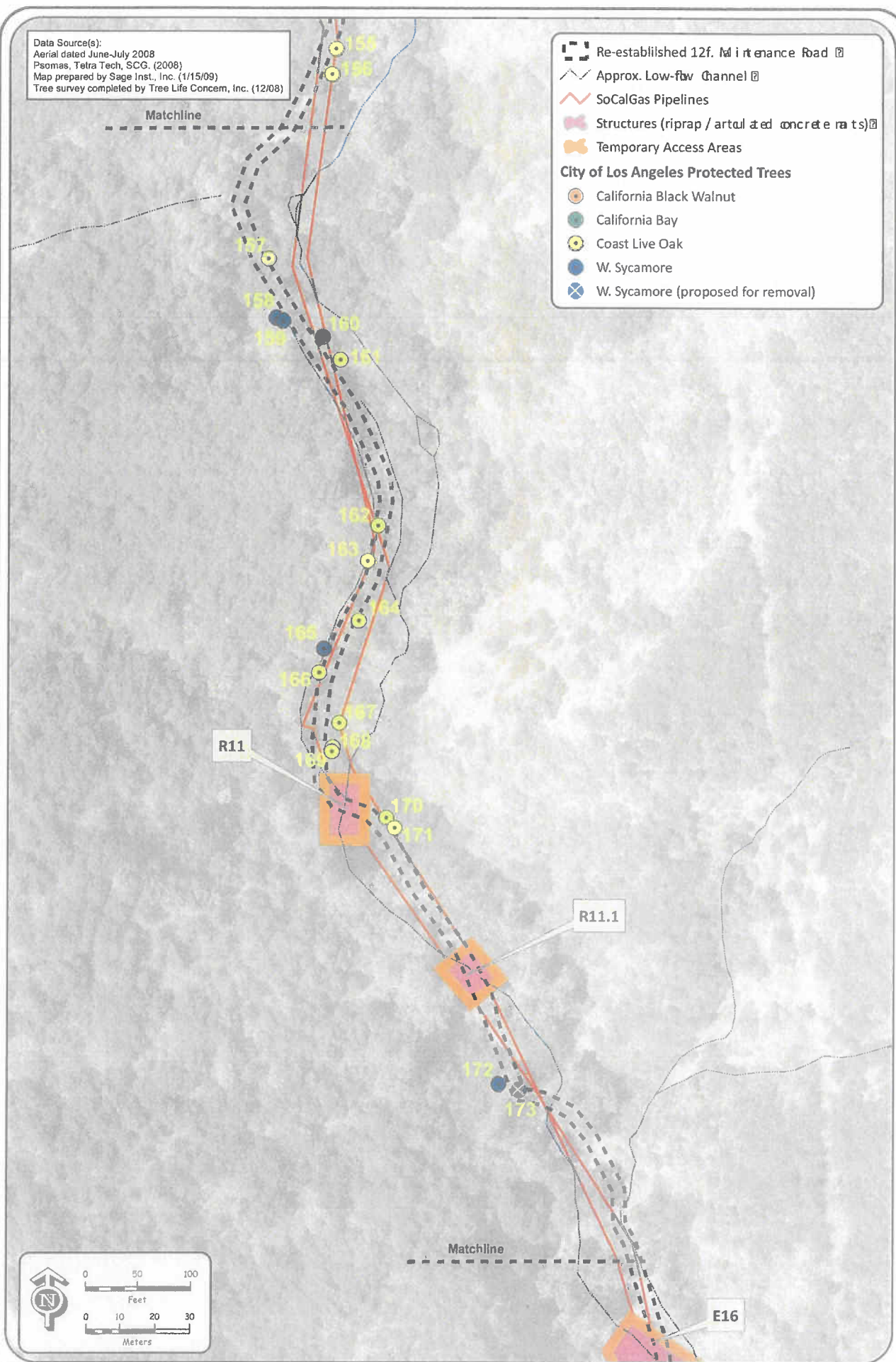


L3003 & L407 (Sullivan Canyon) Pipeline Protection Plan Project  
 Southern California Gas Company






T-11  
 Tree Survey  
 City of Los Angeles

Data Source(s):  
 Aerial dated June-July 2008  
 Psomas, Tetra Tech, SCG. (2008)  
 Map prepared by Sage Inst., Inc. (1/15/09)  
 Tree survey completed by Tree Life Concern, Inc. (12/08)






- Re-established 12f. Maintenance Road
  - Approx. Low-flow Channel
  - SoCalGas Pipelines
  - Structures (riprap / artful & ed concrete mats)
  - Temporary Access Areas
- City of Los Angeles Protected Trees**
- California Black Walnut
  - California Bay
  - Coast Live Oak
  - W. Sycamore
  - W. Sycamore (proposed for removal)

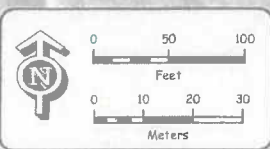
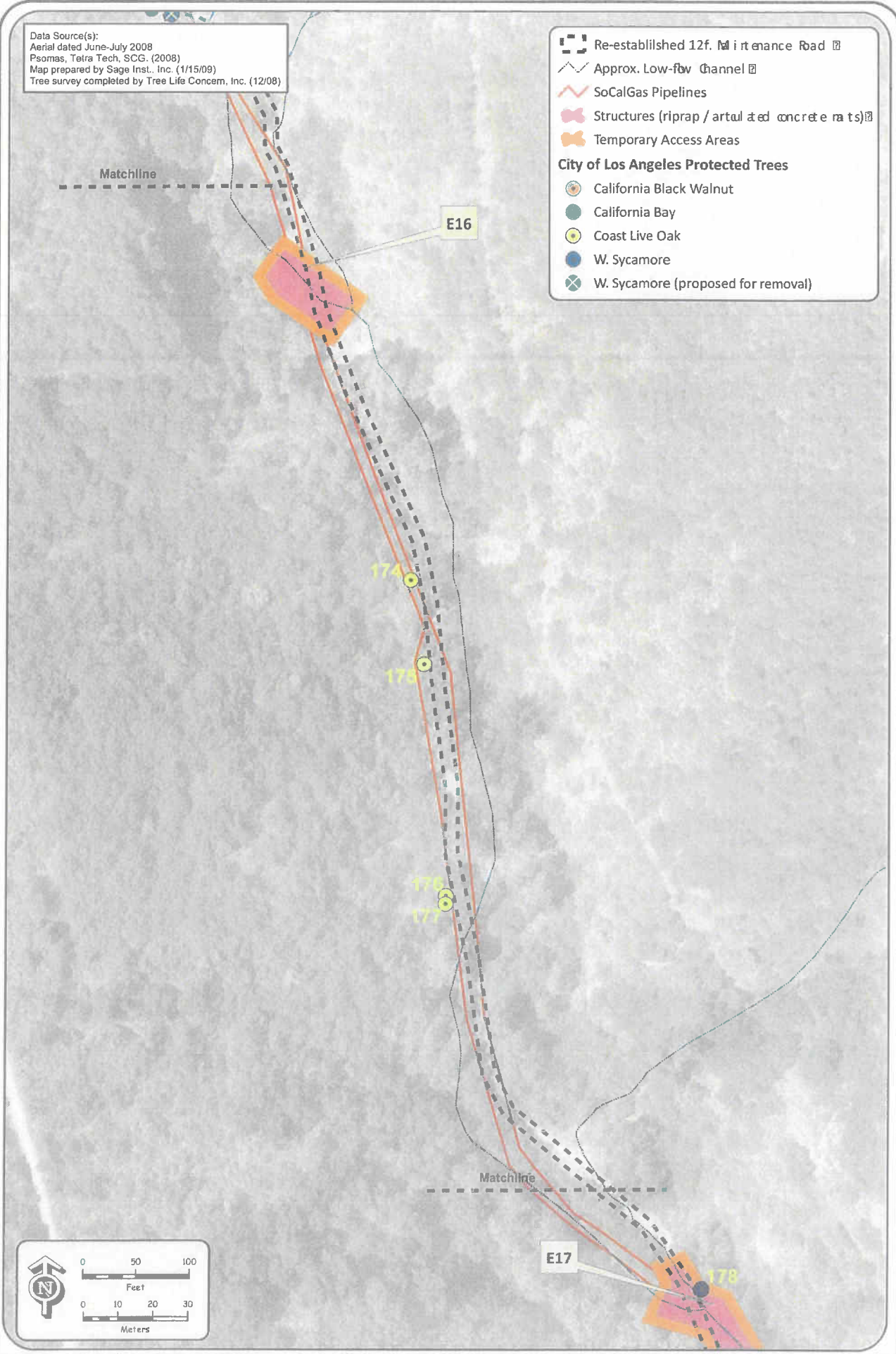


Data Source(s):  
 Aerial dated June-July 2008  
 Psomas, Tetra Tech, SCG. (2008)  
 Map prepared by Sage Inst., Inc. (1/15/09)  
 Tree survey completed by Tree Life Concern, Inc. (12/08)

-  Re-established 12ft. Maintenance Road
-  Approx. Low-flow Channel
-  SoCalGas Pipelines
-  Structures (riprap / artural and concrete mats)
-  Temporary Access Areas

**City of Los Angeles Protected Trees**

-  California Black Walnut
-  California Bay
-  Coast Live Oak
-  W. Sycamore
-  W. Sycamore (proposed for removal)

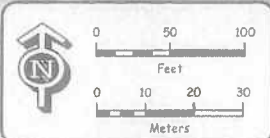
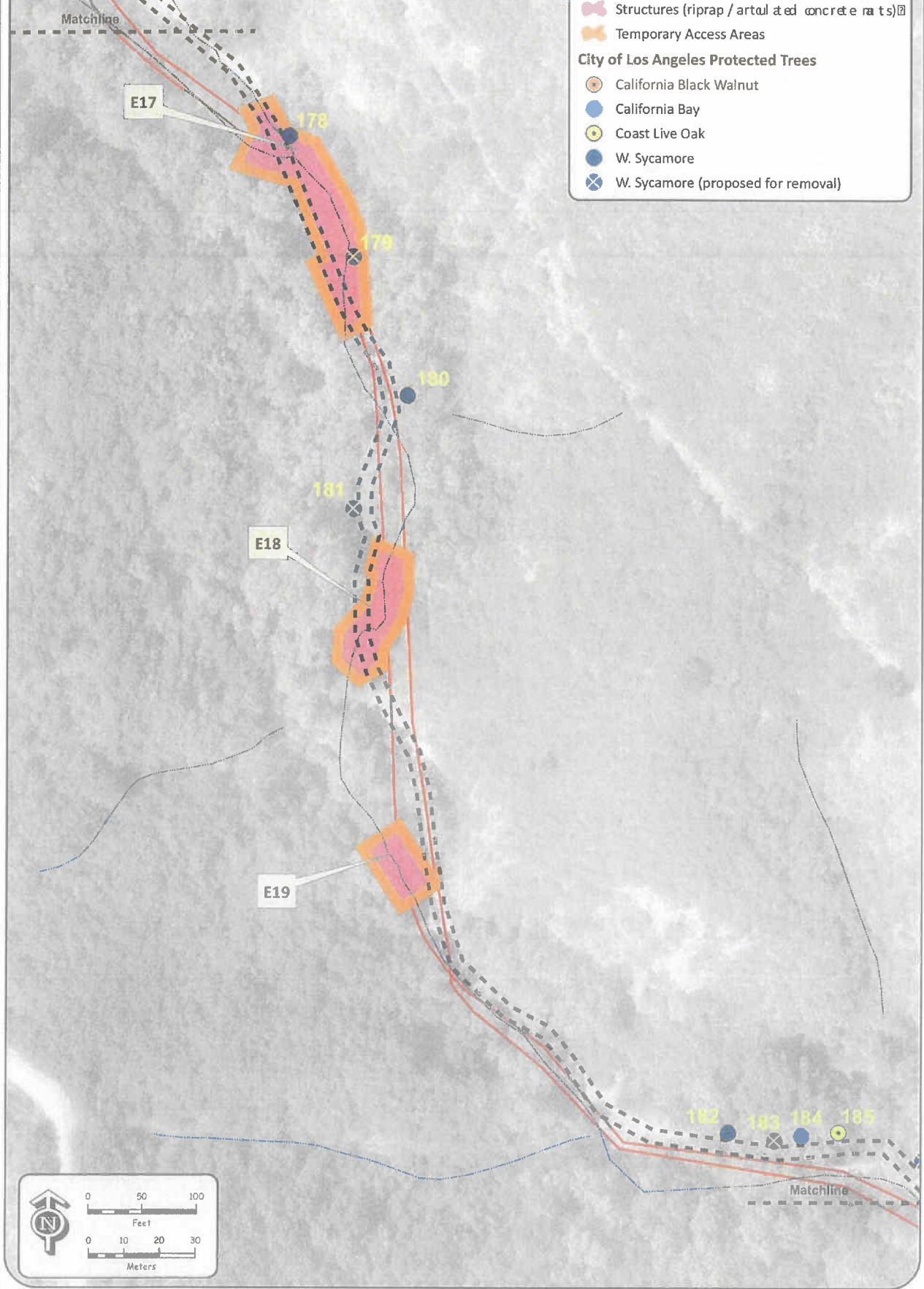


L3003 & L407 (Sullivan Canyon) Pipeline Protection Plan Project  
 Southern California Gas Company










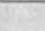
**T-13**  
 Tree Survey  
 City of Los Angeles

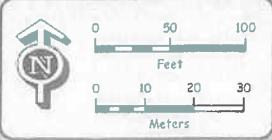
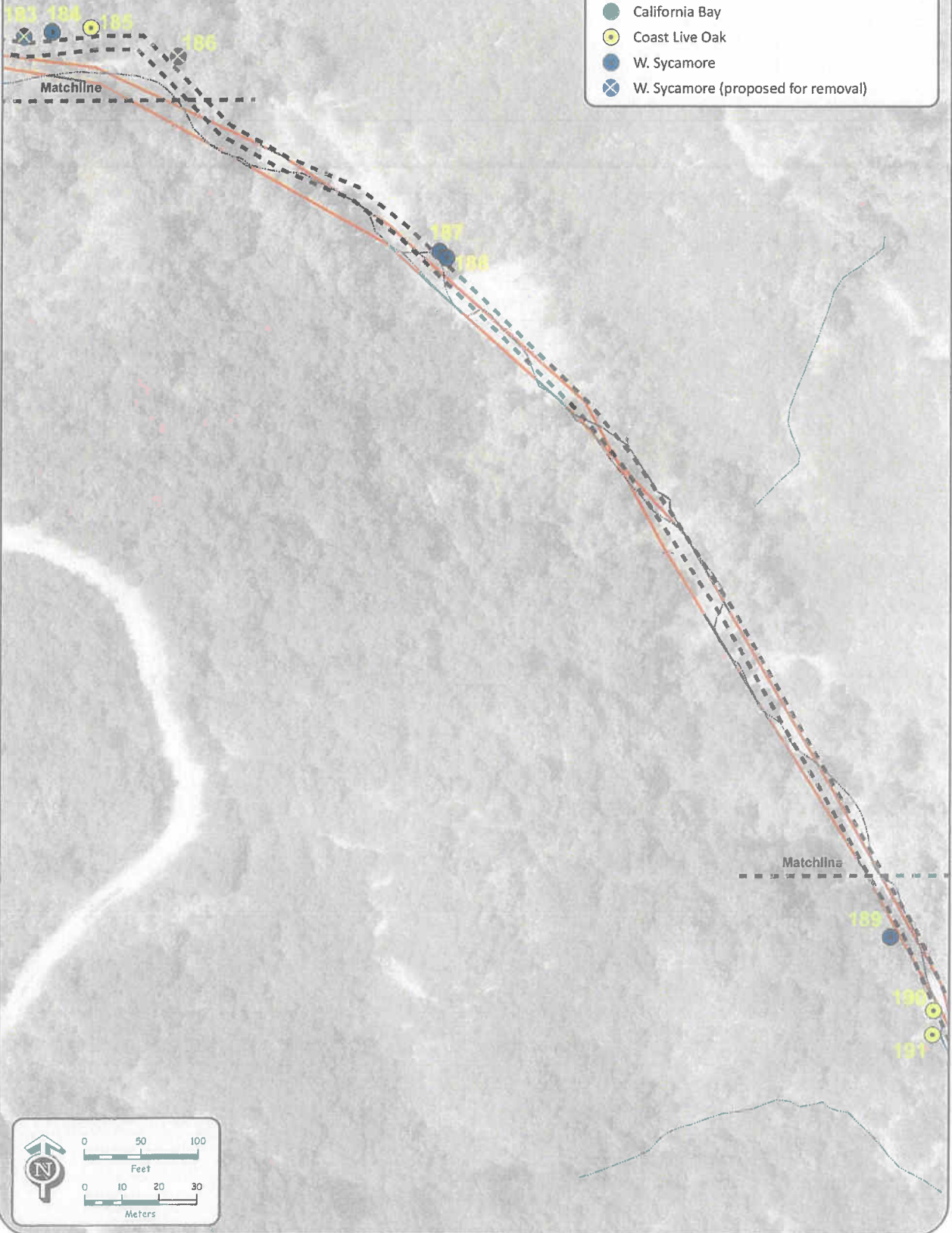
Data Source(s):  
 Aerial dated June-July 2008  
 Psomas, Tetra Tech, SCG. (2008)  
 Map prepared by Sage Inst., Inc. (1/15/09)  
 Tree survey completed by Tree Life Concern, Inc. (12/08)

- Re-established 12f. Maintenance Road
  - Approx. Low-flow Channel
  - SoCalGas Pipelines
  - Structures (riprap / artificial concrete rafts)
  - Temporary Access Areas
- City of Los Angeles Protected Trees**
- California Black Walnut
  - California Bay
  - Coast Live Oak
  - W. Sycamore
  - W. Sycamore (proposed for removal)



Data Source(s):  
 Aerial dated June-July 2008  
 Psomas, Tetra Tech, SCG, (2008)  
 Map prepared by Sage Inst., Inc. (1/15/09)  
 Tree survey completed by Tree Life Concern, Inc. (12/08)

-  Re-established 12ft. Maintenance Road
  -  Approx. Low-flow Channel
  -  SoCalGas Pipelines
  -  Structures (riprap / articulated concrete mats)
  -  Temporary Access Areas
- City of Los Angeles Protected Trees**
-  California Black Walnut
  -  California Bay
  -  Coast Live Oak
  -  W. Sycamore
  -  W. Sycamore (proposed for removal)













L3003 & L407 (Sullivan Canyon) Pipeline Protection Plan Project

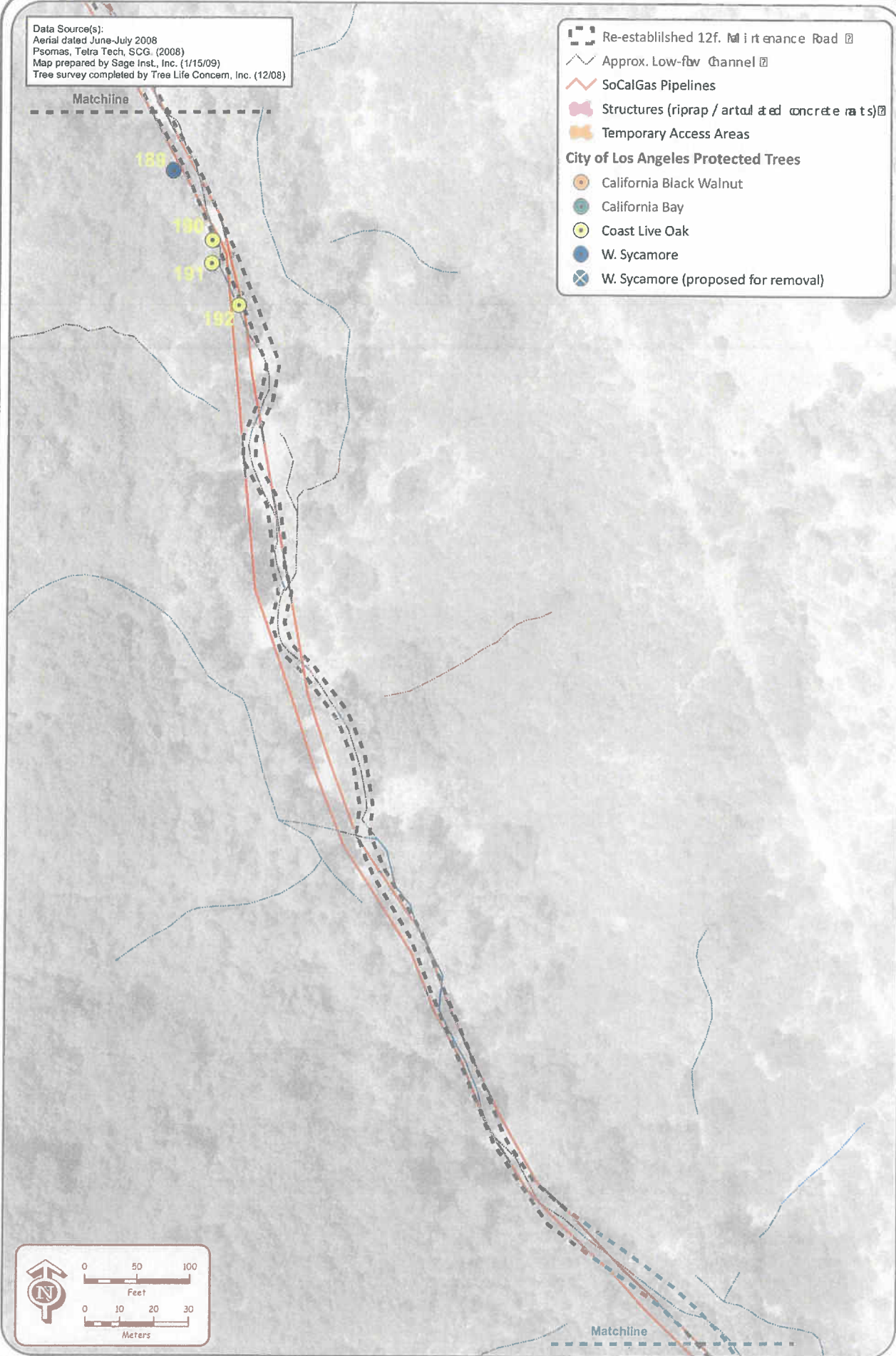
Southern California Gas Company

T-15

Tree Survey  
 City of Los Angeles

Data Source(s):  
 Aerial dated June-July 2008  
 Psomas, Tetra Tech, SCG. (2008)  
 Map prepared by Sage Inst., Inc. (1/15/09)  
 Tree survey completed by Tree Life Concern, Inc. (12/08)

-  Re-established 12ft. Maintenance Road
  -  Approx. Low-flow Channel
  -  SoCalGas Pipelines
  -  Structures (riprap / artful & ed concrete rafts)
  -  Temporary Access Areas
- City of Los Angeles Protected Trees**
-  California Black Walnut
  -  California Bay
  -  Coast Live Oak
  -  W. Sycamore
  -  W. Sycamore (proposed for removal)





Data Source(s):  
 Aerial dated June-July 2008  
 Psomas, Tetra Tech, SCG. (2008)  
 Map prepared by Sage Inst., Inc. (1/15/09)  
 Tree survey completed by Tree Life Concern, Inc. (12/08)

- Re-established 12f. Maintenance Road
  - Approx. Low-flow Channel
  - SoCalGas Pipelines
  - Structures (riprap / artificial concrete mats)
  - Temporary Access Areas
- City of Los Angeles Protected Trees**
- California Black Walnut
  - California Bay
  - Coast Live Oak
  - W. Sycamore
  - W. Sycamore (proposed for removal)

